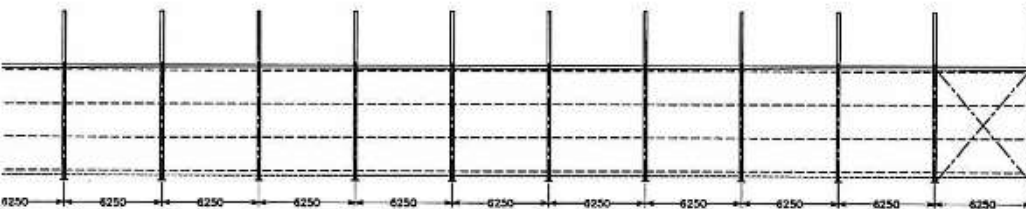
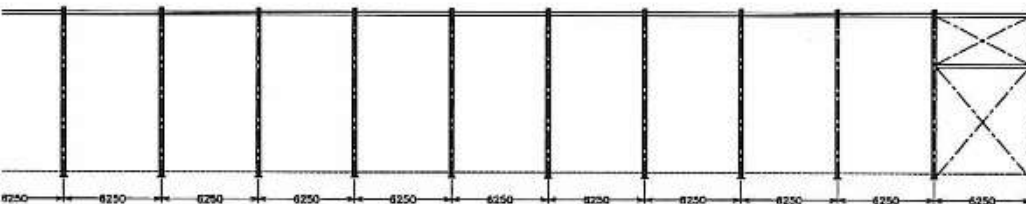


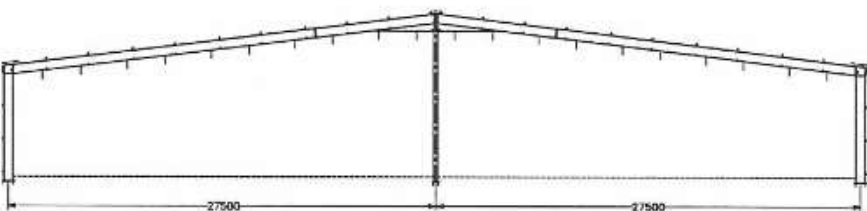
This drawing is the property of AINSCOUGH METALS and shall not be copied or used without the written permission of the company. ©



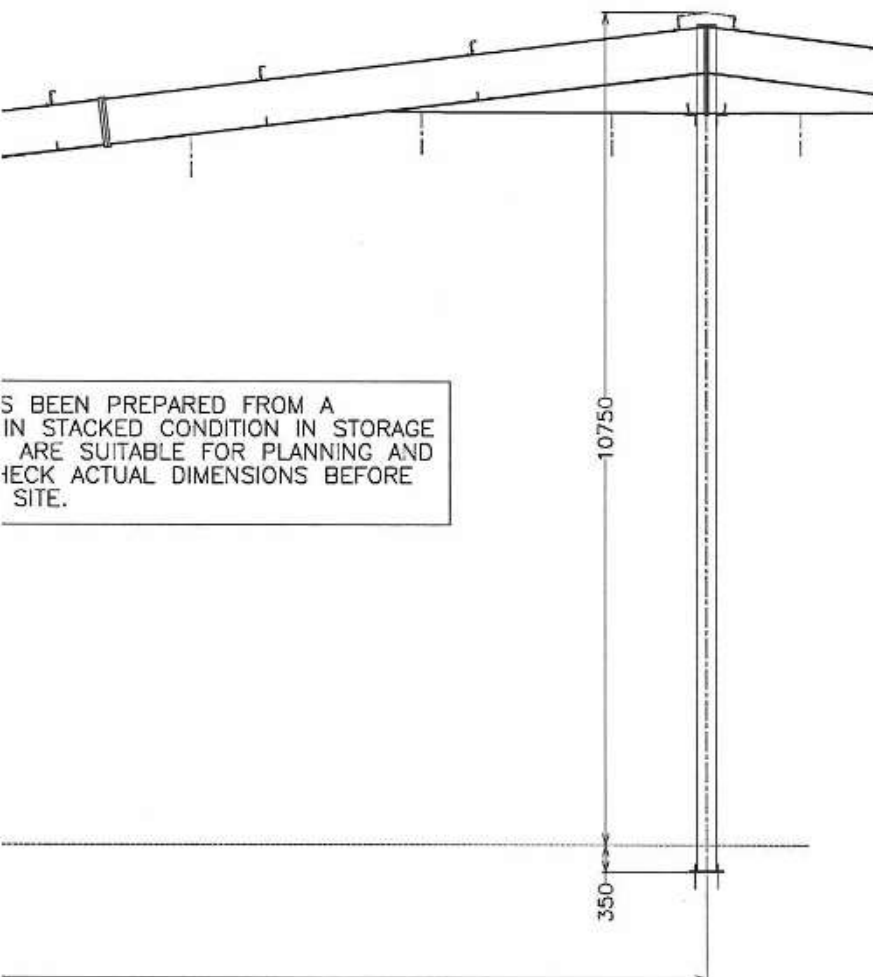
GRID LINE A/C ELEVATION (1:250)



GRID LINE B ELEVATION (1:250)



GABLE ELEVATION (1:250)

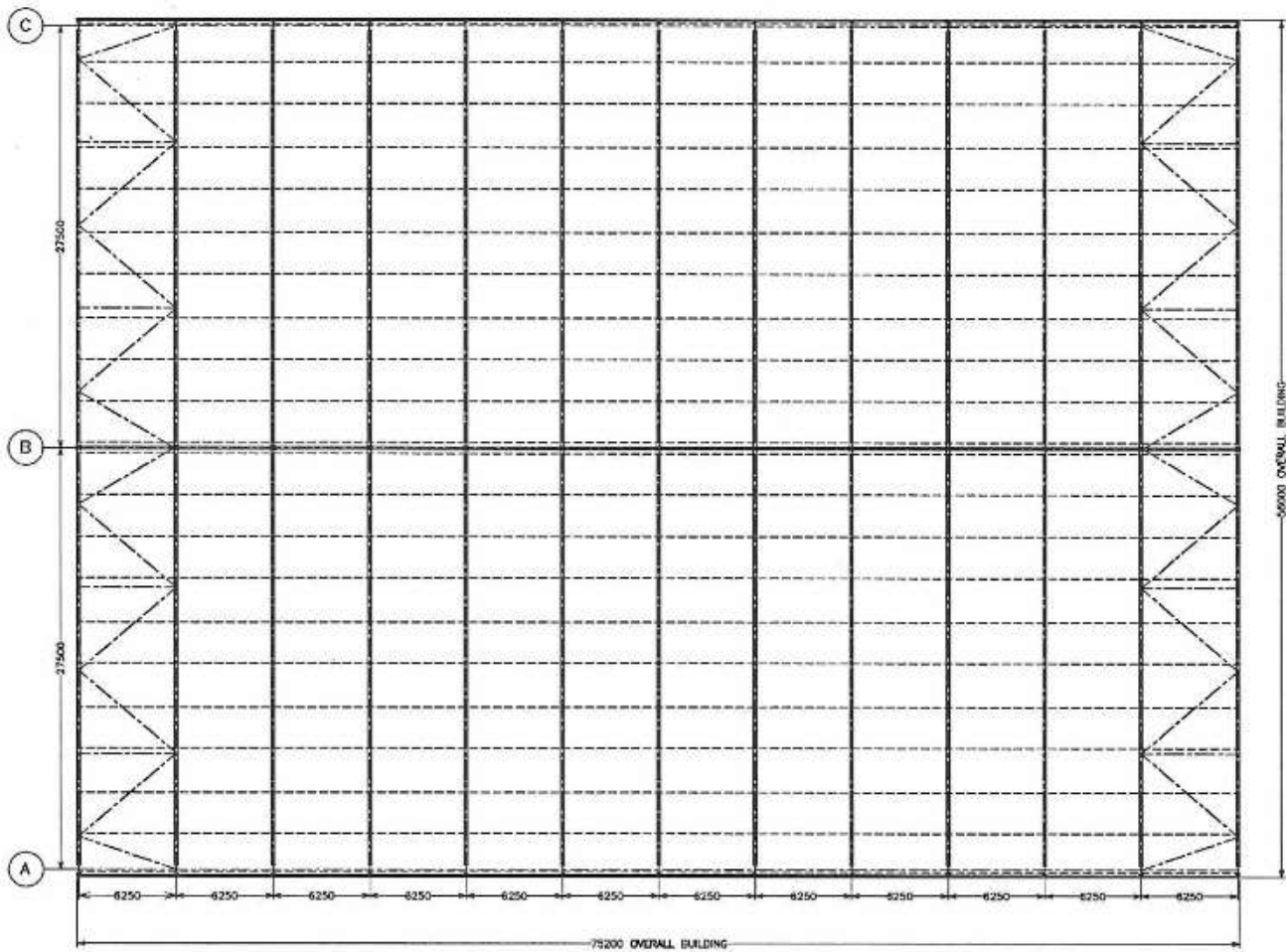


AS BEEN PREPARED FROM A IN STACKED CONDITION IN STORAGE ARE SUITABLE FOR PLANNING AND CHECK ACTUAL DIMENSIONS BEFORE SITE.

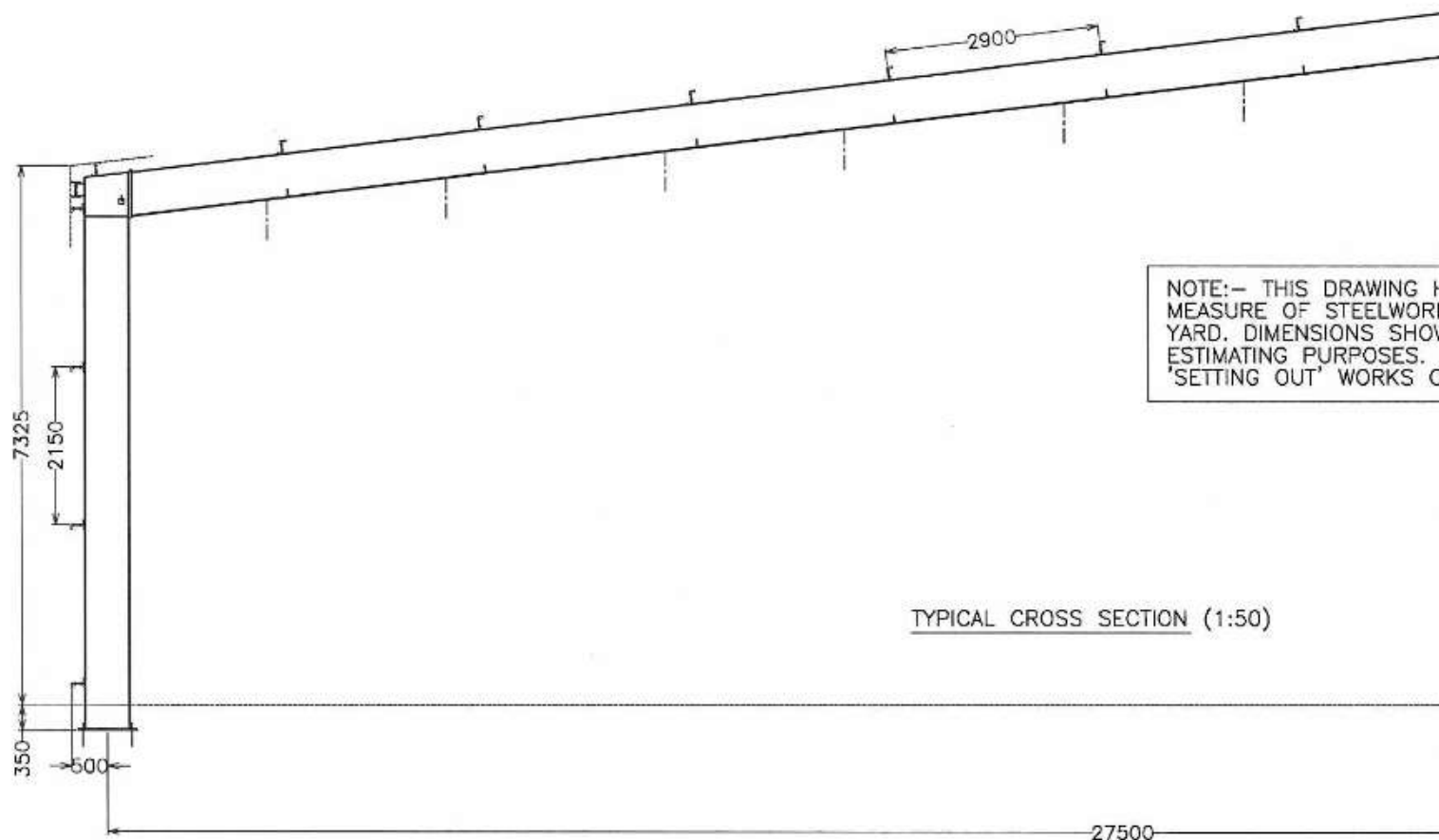
STEELWORK SECTIONS

- PURLINS - 172 DEEP 'Z' PURLIN POSSIBLE SLEEVED/OVERLAP SYSTEM.
- SIDE RAILS - 172 DEEP 'Z' SHEETING RAIL
- PORTAL RAFTERS - 610X229X101 UB
- PORTAL EXTERNAL COLUMNS - 610X229X101UB
- PORTAL INTERNAL COLUMNS - 254X254X73UC
- GABLE POSTS - NONE
- RAFTER BRACING - 114 CHS
- VERTICAL BRACING - 114 CHS / 70X70 RSA
- EAVES TIE - 203X133X30 UB

Rev	Date	Revision
AINSCOUGH METALS		
STEEL STOCKISTS - METAL MERCHANTS BRITANNIA HOUSE, WARRINGTON ROAD, WIGAN, WN1 3AJ, TEL : 01942 615850 FAX : 01942 821385		
Client TBC - COVENTRY PROJECT		Drawn by G.PULLEY
		Date OCT 2014
Title PROPOSED INDUSTRIAL PORTAL FRAME FOR RE-LOCATION SECTION SIZES AND INDICATION OF PRINCIPAL DIMENSIONS		Scale AS SHOWN AT A1
		Checked by
		Drawing No COVENTRY 001



ROOF PLAN (1:250)



NOTE:- THIS DRAWING IS FOR ESTIMATING PURPOSES. DIMENSIONS SHOWN ARE FOR 'SETTING OUT' WORKS ONLY. THIS DRAWING IS NOT TO BE USED AS A MEASURE OF STEELWORK IN THE YARD.

TYPICAL CROSS SECTION (1:50)